

Welcome to the first issue of the Eppleworth Adult Centre newsletter.

WHAT'S INSIDE?

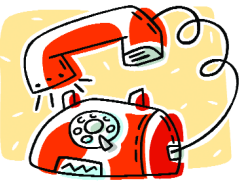
- *First Annual Gala!*
- *Some Very Special Thank You's*
- *Looking for a New Home*
- *Transportation*
- *In the Spotlight !*

Mission Statement

It is the mission of the Eppleworth Adult Centre to continually ensure a safe and reliable environment for the growth and enjoyment of its participants.

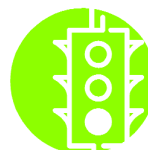
It is the mandate of the Eppleworth Adult Centre to promote the education of its members through encouragement of sound practices in education, life skills, cooperation, family values, physical fitness and community experiences.

A Day in the Life



Eppleworth places emphasis on individual needs. Our program strives to enhance existing literacy and life skills.

In addition, participants are provided opportunities to maintain, and further develop social skills, recreational activities (including YMCA membership), community access skills, workskills and literacy lessons .



First Annual Gala Brings Down the House!

Over 150 attendees enjoyed the Eppleworth Adult Centre's First Annual Fundraising Gala, held on November 5th, 2003 at the Toronto Centre for the Arts.

The evening's highlights included a performance of Snow White by the Eppleworth 'Gang', comedy from Las Vegas as well as a live and silent auction. The event was a memorable success due mostly to the efforts of staff, friends and many generous sponsors.



Getting to the Centre Then Back Home

Some of our parents and guardians are no longer able to take us to the Centre and back home. Most of us are unable to take the TTC on our own. Our dream is to have transportation for all of us so that we may be able to continue to enjoy our Day Program.

Our friends are presently developing a transportation sponsorship program to help make our dream come true.

Looking for a New Home

Our Day Program is currently located in a church that may be unavailable for our use in the very near future. We may be forced to look for a new home. The ideal space would be open to leasehold improvements such as classroom divisions and full kitchen. Access to a gymnasium would be a dream come true!



Eppleworth Adult Centre



This Issue's Spotlight

Shawna Ormerod, who played Dopey in this year's Gala presentation of Snow White, is the proud daughter of Wally and Flora Ormerod. Since her enrolment at Eppleworth, Shawna has now begun to speak. *(Now if she could only learn how to hush. Shawna believes that she has a lot of catching up to do.)*

If you wish to learn more about the Eppleworth Adult Centre (we have lots of pictures) or how you can become a sponsor, simply address all questions by return e-mail.

Bye for now,
the "gang"

Thank you to some very special friends:

Mr. Kevin Brown & Mr. Chuck Nervick

And a big 'Thank you' to our sponsors:

Stadia Industries,
Paragon Security,
Manulife Financial,
Tomic Interiors,
Bos Glass,
Four Seasons Drywall,
Impact Electrical & Mechanical,
Sun Life Financial,
Hallmark Housekeeping Services,
Intercon Security,
Solar Group,
Turtle Island Recycling,
Classic Fire Protection,
RMG Contract Interiors,
SKF,
Northern Light Technology,
Otis Elevator,
Renwall Interiors,
Siemens,
Govan Brown & Associates,
Pro-Spec Roof Consultants,
Semple Gooder,
Litemor,
Skyreach Window Cleaning,
Wasteco,
The Cooperators and many more...

Although Eppleworth has been operating for approximately 10 years, the financial burden on each of our families is becoming more and more difficult. Thanks to the gala, we will be able to enjoy the Centre for another year.

We are all looking forward to the next November gala!